

## Symptoms reported in SARS-CoV-2 PCR negatives

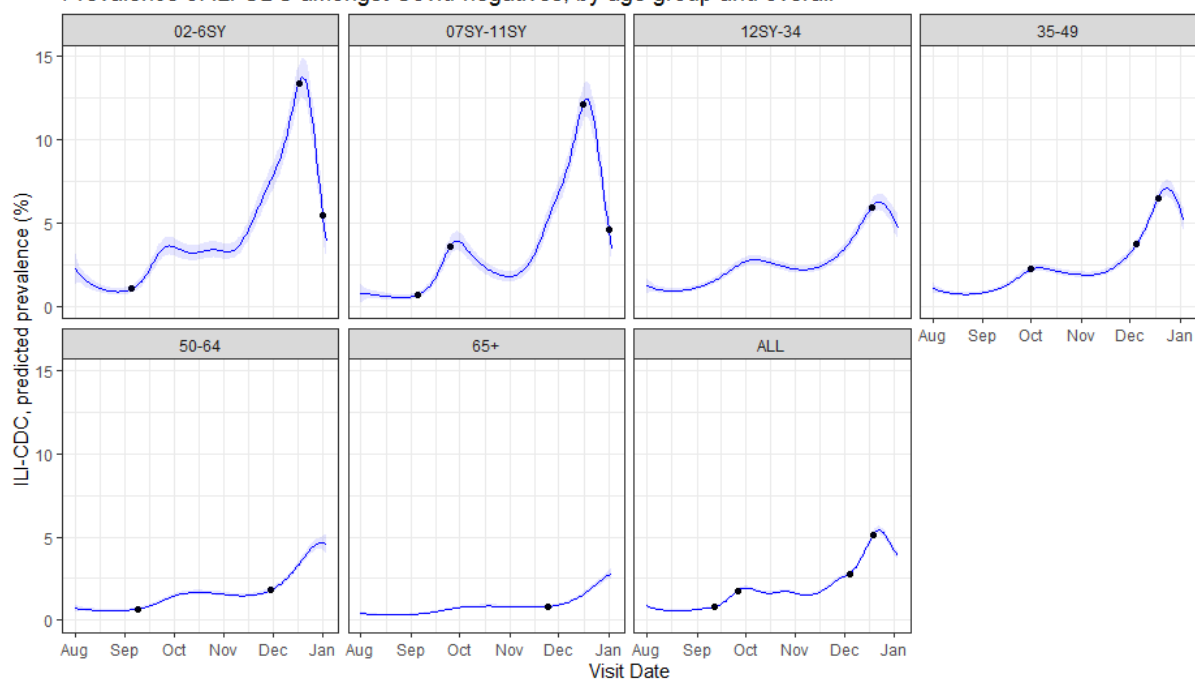
Elisabeth Dietz, Ann Sarah Walker on behalf of the COVID-19 Infection Survey  
Nuffield Department of Medicine, University of Oxford

*Current Data Run: August 1<sup>st</sup> 2022 – January 3<sup>rd</sup> 2022*

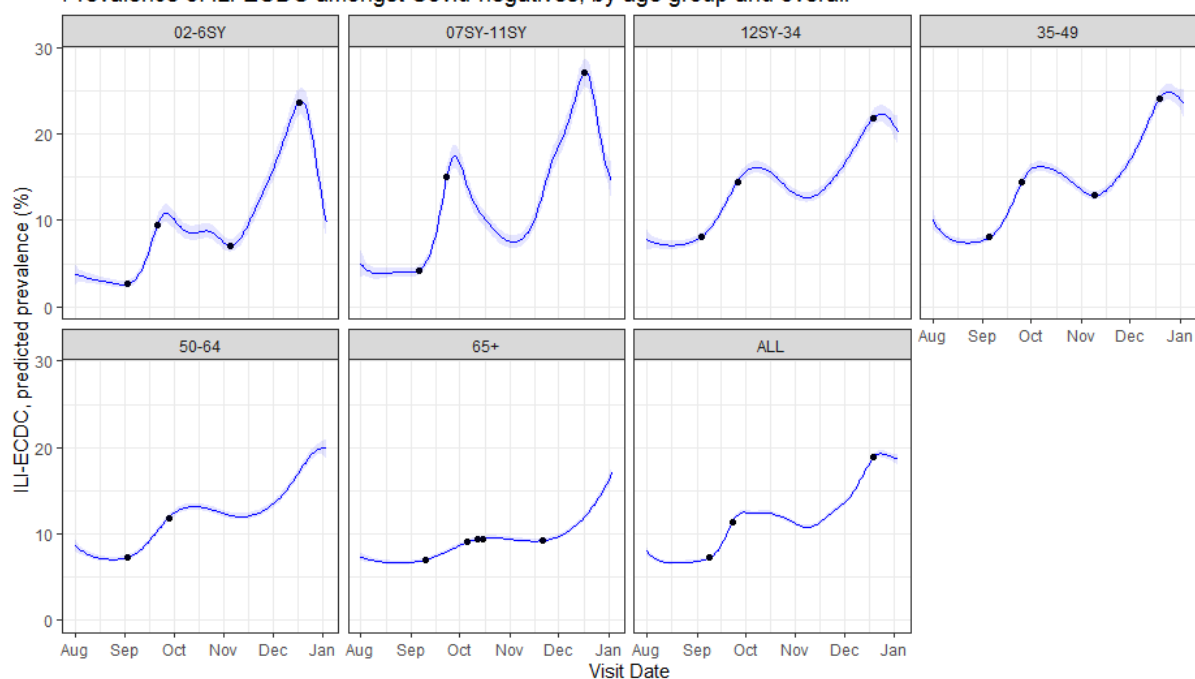
Generalized Additive Models (GAMs) were fitted on data from study visits in England between August 1st 2022 and January 3rd 2022. Only visits with a confirmed negative PCR test for Covid-19 were included. Models were estimated separately by age group and for the overall population. GAMs were modeled using a negative-binomial distribution with log link, modeled with thin plate splines ( $k=40$ ), penalized based on the third derivative. No other explanatory variables than time (measured in number of days) were included in the models. Breakpoints are identified by the first day zero is no longer in the 99% credible interval for the second derivative (corresponding to a 99.5% probability of change in trend)

(<https://www.medrxiv.org/content/10.1101/2022.09.14.22279931v1>). **Symptoms reported refer to symptoms experienced in the last 7 days.**

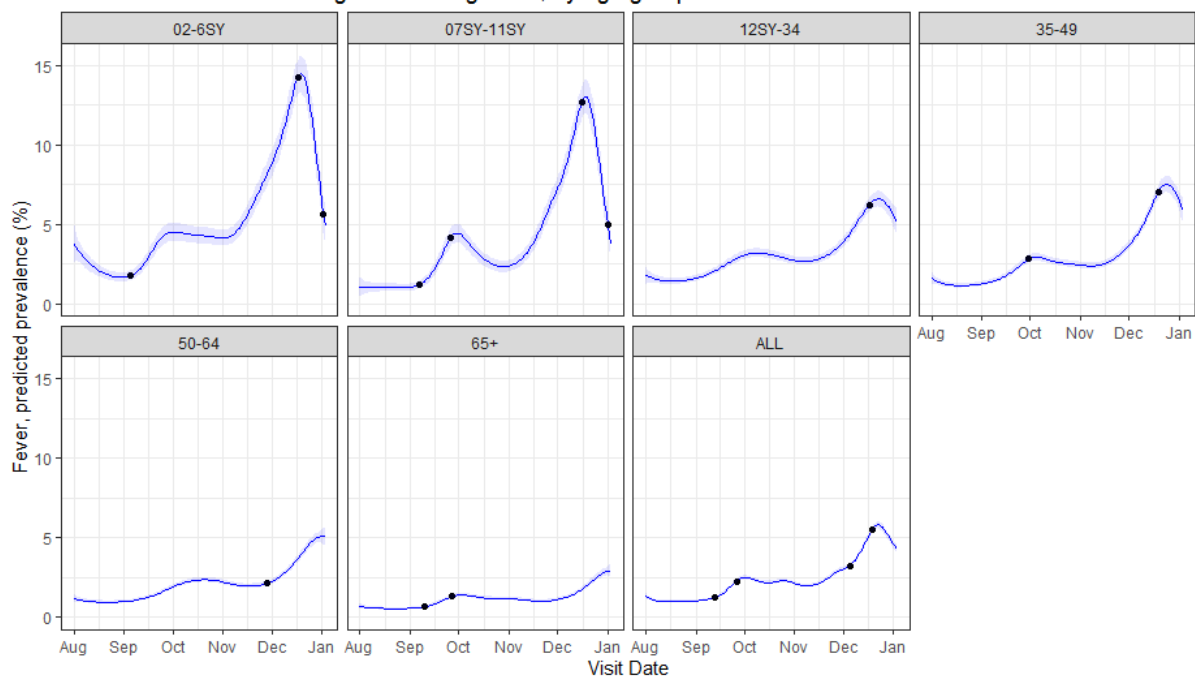
**Prevalence of ILI-CDC amongst Covid-negatives, by age group and overall**



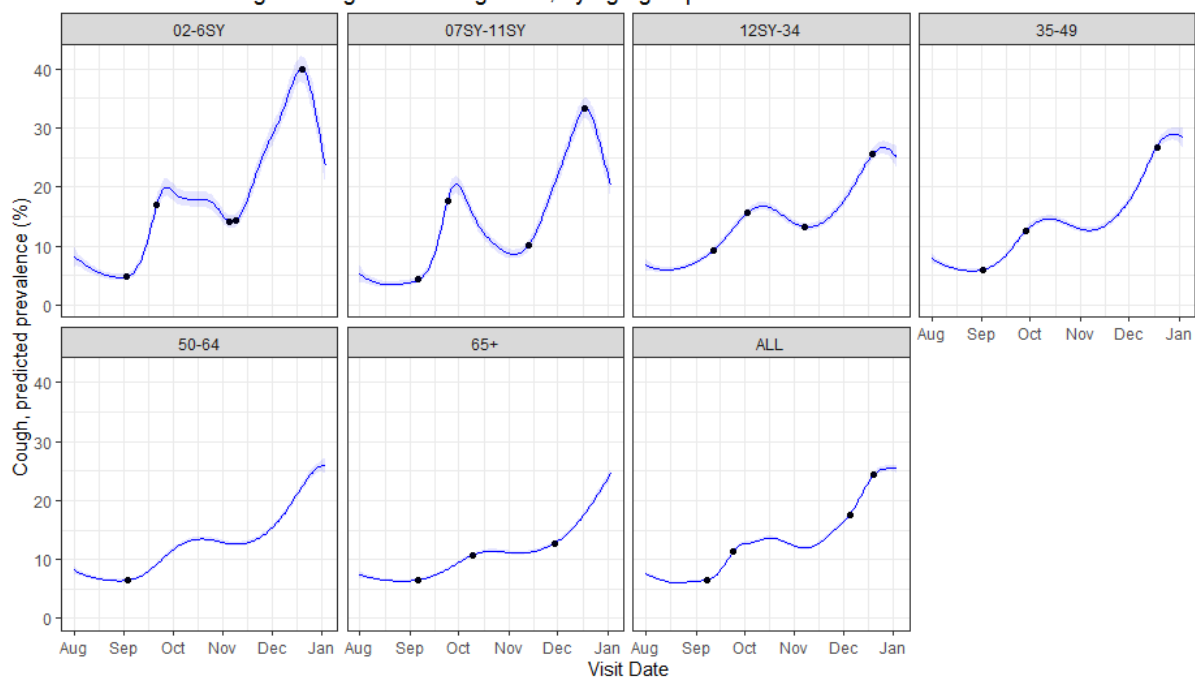
**Prevalence of ILI-ECDC amongst Covid-negatives, by age group and overall**



Prevalence of Fever amongst Covid-negatives, by age group and overall



Prevalence of Cough amongst Covid-negatives, by age group and overall



Prevalence of Sore throat amongst Covid-negatives, by age group and overall

